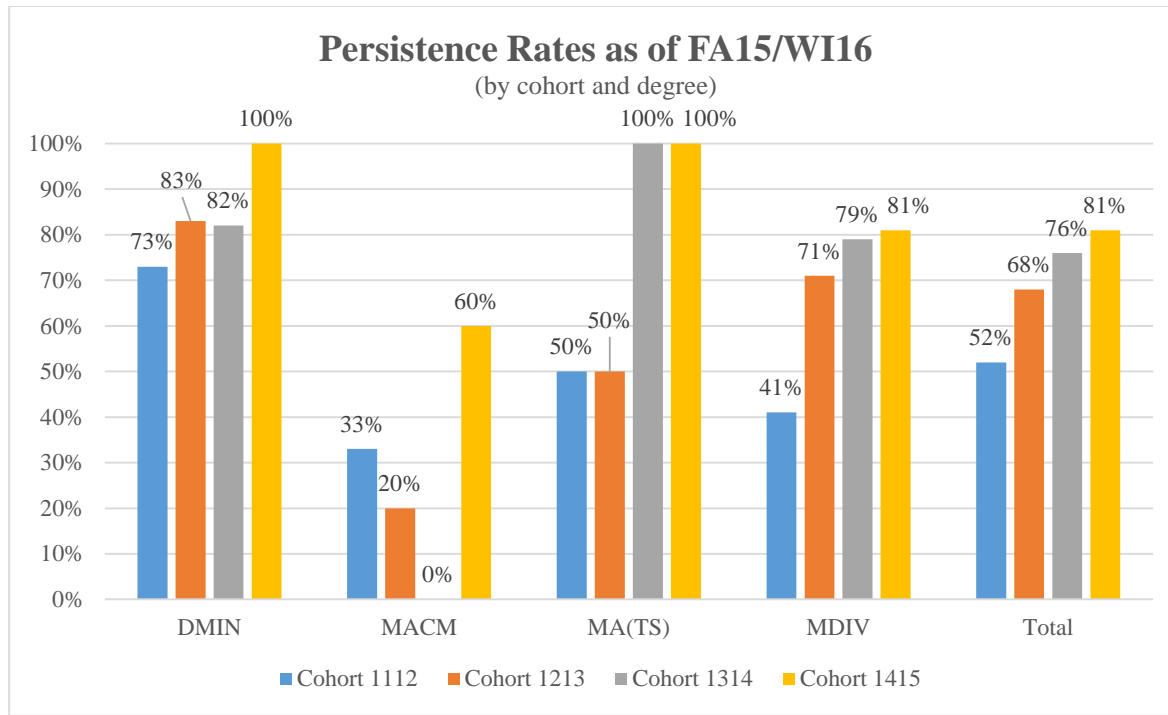


AY2015-2016 Persistence Report



Cohort 1112			
Degree	Admit	Persist	Rate
DMIN	22	16	73%
MACM	3	1	33%
MA(TS)	4	2	50%
MDIV	34	14	41%
Total	63	33	52%

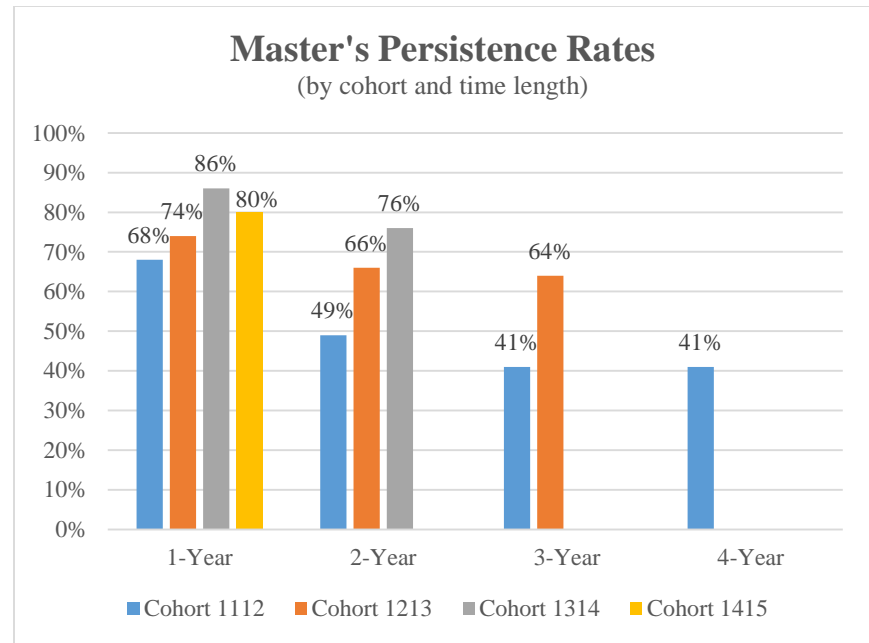
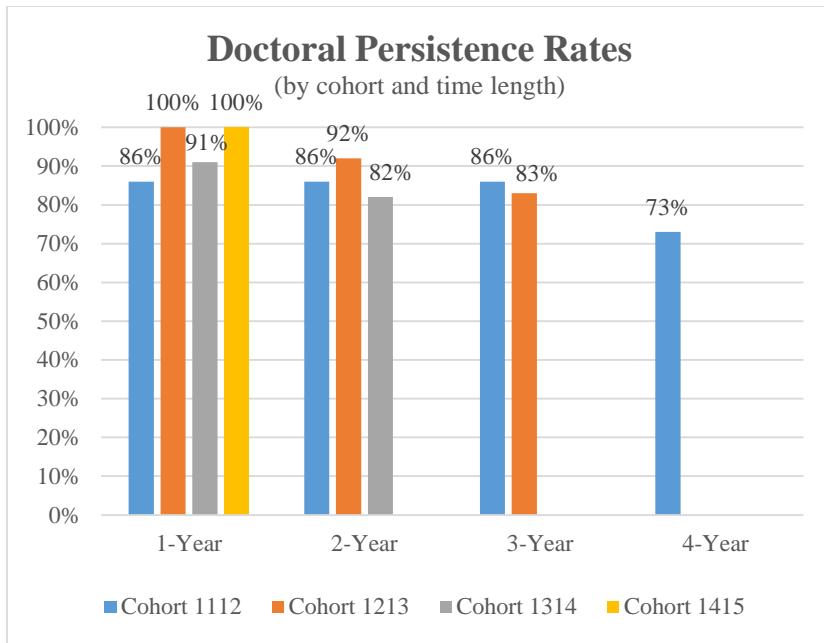
Cohort 1213			
Degree	Admit	Persist	Rate
DMIN	12	10	83%
MACM	5	1	20%
MA(TS)	4	2	50%
MDIV	41	29	71%
Total	62	42	68%

Cohort 1314			
Degree	Admit	Persist	Rate
DMIN	11	9	82%
MACM	3	0	0%
MA(TS)	2	2	100%
MDIV	38	30	79%
Total	54	41	76%

Cohort 1415			
Degree	Admit	Persist	Rate
DMIN	2	2	100%
MACM	5	3	60%
MA(TS)	4	4	100%
MDIV	36	29	81%
Total	47	38	81%

Persistence rates are calculated as continued enrollment or approved leave of absence toward (and including) graduation. Master's degree data as of Fall 2015, DMin data as of Winter 2016.

AY2015-2016 Persistence Report



Doctoral Persistence Rates				
Cohort	1-Year	2-Year	3-Year	4-Year
Cohort 1112	86%	86%	86%	73%
Cohort 1213	100%	92%	83%	
Cohort 1314	91%	82%		
Cohort 1415	100%			

Master's Persistence Rates				
Cohort	1-Year	2-Year	3-Year	4-Year
Cohort 1112	68%	49%	41%	41%
Cohort 1213	74%	66%	64%	
Cohort 1314	86%	76%		
Cohort 1415	80%			

Persistence rates are calculated as continued enrollment or approved leave of absence toward (and including) graduation. Master's degree data as of Fall 2015, DMin data as of Winter 2016.